

# Turning water audits into actionable plans

Explore Flowless' Snapshot Analysis, the practical way to get you started with water loss management.



## What is Snapshot Analysis?

For many water utilities, regular water audits feel like a routine task. But what if these audits could be extended to a strategy for active loss reduction?

Flowless' Snapshot Analysis turns your existing data into valuable insights, analyzing your water network's performance without complex IT integrations. It picks up where SCADA leaves off, using historical flow and pressure data to provide easy-to-read performance charts and dashboards.

With the power of WLR&A's System Correction Factor (SCF), you'll get more accurate & customized leakage target for each zone, identifying how much water loss can be recovered. It helps prioritize areas for **Active leakage Control** & **pressure management**, making it easier to reduce water losses effectively.

## How it Works



**Data Collection:** we'll start by getting your network data for the past few months, including flow, pressure, & billing data, in CSV or other standard formats.



**Data Input:** Once we get the data, we'll plug them into Flowless' platform, and that's where magic happens!



**Data Analysis:** Flowless platform combined with SCF from WLR&A analyzes flow patterns, establishes baselines, & calculates accurate recoverable leakage targets for each zone.



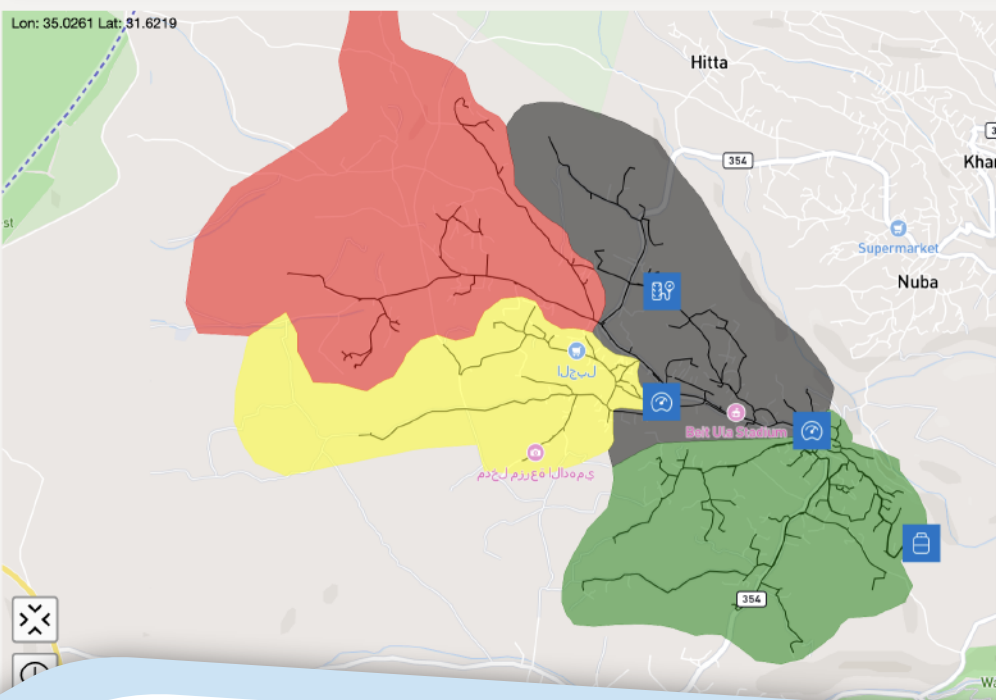
**Actionable Insights:** the generated data-driven insights help you identifying zones with the highest leakage rates, predicting potential pipeline bursts, and optimizing pressure management to effectively reduce water loss.

## Is Snapshot Analysis Designed for You?

Snapshot Analysis offers a straightforward, budget-friendly way for utilities to transform compliance activities into real progress on water loss reduction, without the complexity of setting up new systems or IT significant investments:

- ✔ **Simple, Fast, & Effective:** no complex integrations, no additional IT investments, providing invaluable insights for your team to achieve results FAST.
- ✔ **Holistic Analysis:** Get an overarching view of your water system for better resource allocation, guiding your team to the right intervention at the right time using the right tools.
- ✔ **Accurate, Accessible, & Scalable:** Making these easy-to-digest interpretations accessible for your team, integrating new tools as your needs grow.
- ✔ **Losses Lifecycle Assessment:** A simple first step toward real-time monitoring; enabling future upgrades when you're ready and satisfied with the results.





Zone 1

Insights Events Metadata Constants

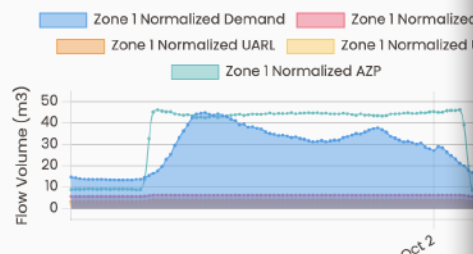
Zone 1 Daily Demand  
15 Oct 2022 - 3:00 AM

2,811.36 m<sup>3</sup>/day

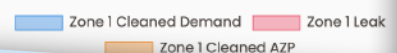
Zone 1 Daily Leak  
15 Oct 2022 - 3:00 AM

958.06 m<sup>3</sup>/day





Zone Monthly Leak Profile



Demand vs Leak






## Ready? Here is the data we need to get you started:

-  **Bulk water flows**  
Flow meter readings for all inlet and outlet meters within the selected DMA (District Metered Area), ideally with hourly readings.
-  **Pressure**  
Hourly pressure readings at critical points, especially the average zone pressure, for accurate assessment.
-  **Consumption/Billing data**  
Monthly consumption data for all consumer meters within the DMA for at least one year (more data is advantageous).
-  **Spatial & hydraulic data**
  - **Hydraulic model:** For more advanced analysis, if available.
  - **Shape-files:** Including pipelines, zones, measurement points, and key facilities to enable precise visualizations on a map.

## Flowless' Leak Lifecycle Management Approach

Identify the recoverable leak, and define the right interventions to tackle those leaks using SCF & UARL.

-  Stop guessing where your leaks are hiding. With **MNF analysis**, you'll know exactly which DMAs have the biggest problems and prioritize accordingly.
-  **Accurate Insights:** Using UARL (Unavoidable Annual Real Loss) values corrected using SCF helps you set customized targets for each zone, prioritize areas for active leakage control or pressure management, & focus on recovering water losses effectively.
-  **Identify the right intervention:** Use WaterCloud's leak inspector to simulate interventions like pressure management and see their impact on your leakage levels before you act.

